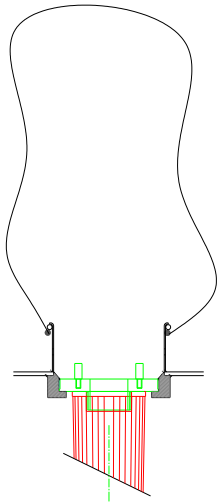


# 'Clean Change' Principle

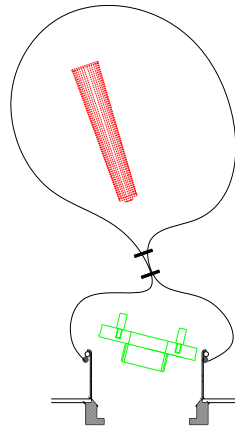
(After Removal Of Jet Tubes)

1



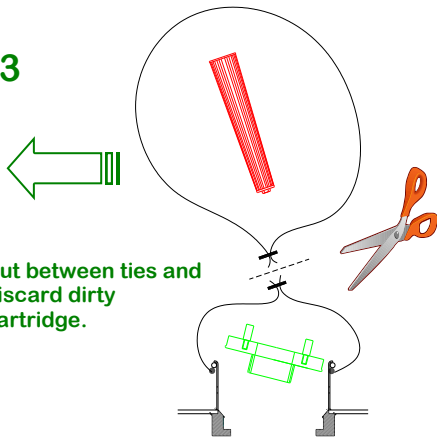
Fit bag onto spigot

2



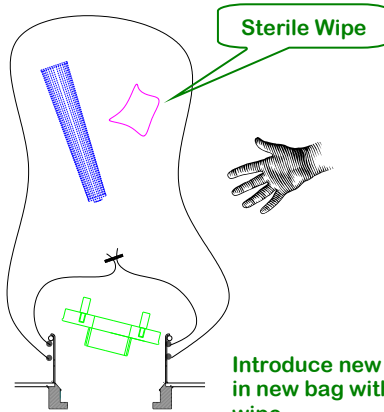
Remove special adaptor.  
Remove dirty cartridge into bag and double tie.

3



Cut between ties and  
discard dirty  
cartridge.

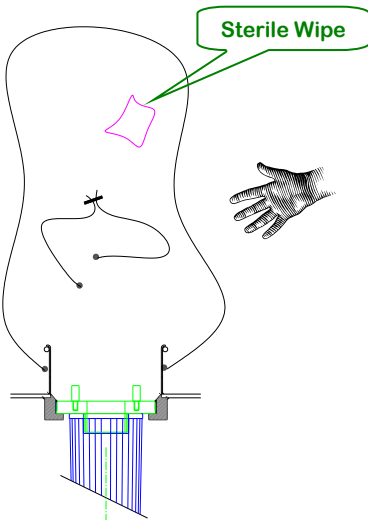
4



Sterile Wipe

Introduce new cartridge  
in new bag with sterile  
wipe.

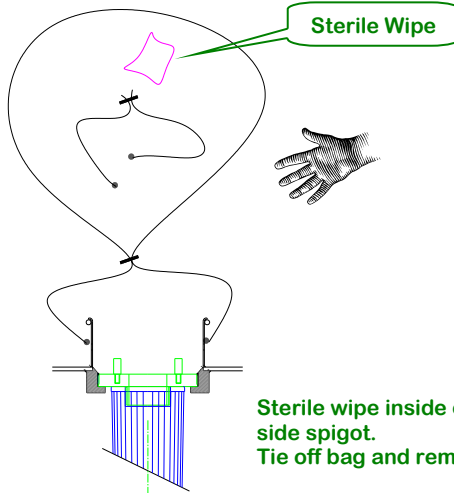
5



Sterile Wipe

Remove end of  
original bag.  
Fit special adaptor  
to new cartridge  
and insert into  
housing.

6



Sterile Wipe

Sterile wipe inside clean  
side spigot.  
Tie off bag and remove.